



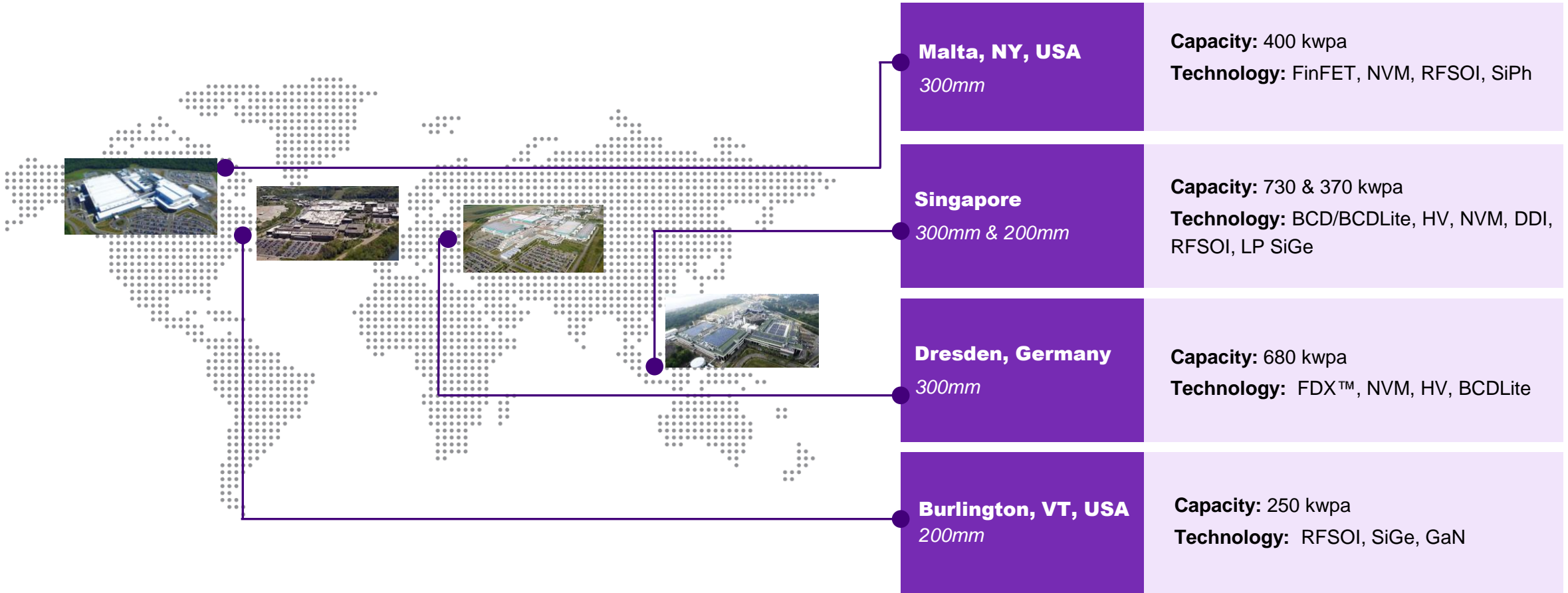
# Intro to GF Power

fab**9** Together  
we  
soar  
in 2024

**October 2024**



# Global manufacturing footprint - current



Products on the differentiated technology platforms our customers need  
where they want them produced

**Note:**

- 1. Kwpa is defined as 2022 capacity in thousand wafers per annum
- 2. 200mm capacity translated to 300mm equivalent

# Fab 9 Campus



Market Segments

Mobile, wireless infrastructure, automotive, industrial, and medical



Fab 9 Facts

- US Trusted Foundry  
~ 43% of Vermont State Exports



Manufacturing capacity

GF's 2<sup>nd</sup> Largest 200mm Fab to Singapore's Giga



Employees

~ 1,800  
Largest private employer in the state



Operating since

1957 Site Origin  
2015 GF acquired

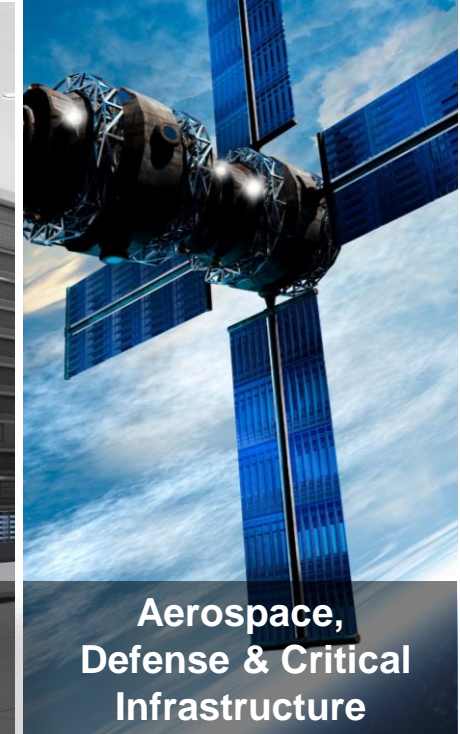
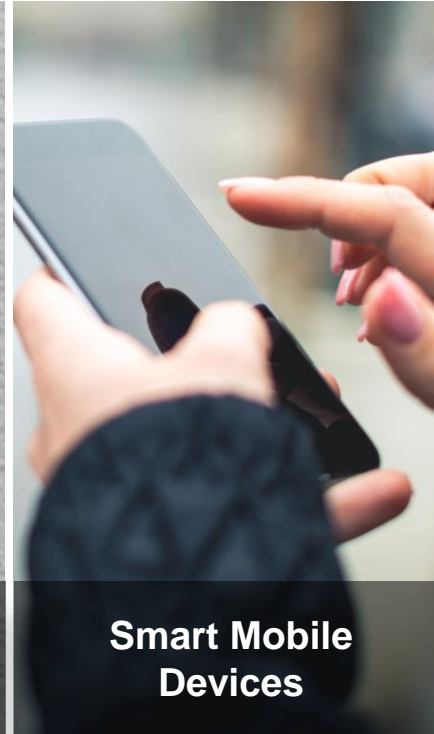


Essex and Williston Campus

Essex ~ 235 acres  
Williston ~ 440 acres



# Uniquely positioned in markets that matter



**Software Defined**  
Enhanced technology platforms for next generation vehicles

**Secure and Connected**  
Innovative solutions for AI at the edge

**Performance, Power, & Speed**  
Immersive experiences with industry-leading technologies

**Future Ready**  
Ultra-fast, ultra-efficient connectivity in the age of AI

**Secure, Trusted and Resilient Supply**  
Mission critical technologies with reliable regional supply



# Fab 9 Campus Overview

## Site Highlights



**Site:** Established in 1957  
**Land:** 675 Acres  
**Campus:** Town of Essex and Town of Williston  
**30 Buildings**

- 3,500,000 sf Building Space
- 500,000 sf Cleanroom Space

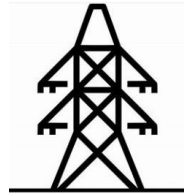
## Electricity

**Consumption:** 340,000 mWh annually

- Approx Equal to City of Burlington

**Demand:** 55MW  
**Infrastructure:** 115KV ( Dual Source )

- Step-Down Equipment: 115KV → 208V



## Natural Gas / Fuel



**Natural Gas:** 697,000 MMBTU  
**Fuel Oil:** 21,000 MMBTU  
**High Temperature Water:** 2,740,000 gallons

## Water

**Consumption:** 3,400,000 GPD

- Storage: 2,000,000 Gallons

**Ultrapure Water:** 1,400,000 GPD  
**Wastewater Treatment:** 3,200,000 GPD

- Site Storage: 12,000,000 Gallons
- Permit Volume: 8,000,000 GPD



# Resource Management

## Performance, Progress, Goals in Sustainability

### 2020-2023

### 2025 Goals

### 2050 Goals

Energy



**-17%**

Electricity use intensity

**-34%**

Electricity use intensity from 2020

**Carbon  
Neutral**

Water



**-19%**

Water use intensity

**-26%**

Water use intensity from 2020

Waste



**-13%**

Total waste intensity

**-16%**

Total waste intensity from 2020

**GHG**

### 2030 Goal

Journey to  
**ZERO**  
Carbon

**-6%**

Absolute from 2020<sup>(1)</sup>

**-25%**

Absolute from 2020

**Net-Zero**

Note:

1. GHG emissions include scope 1 and 2

# Our Community in 2024

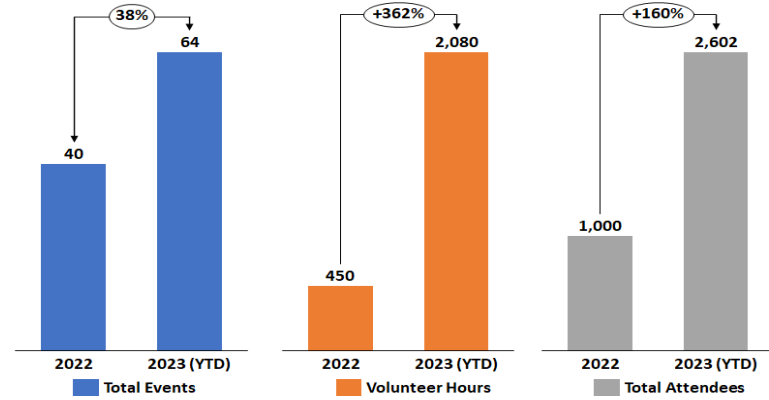
Building community and a sense of belonging is the fabric of who we are in Burlington



STEM@GF



globalgives



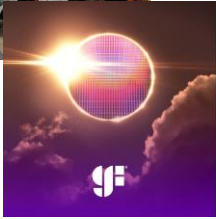
BTV Hosts Lake Champlain Chamber's Legislative Breakfast



## STEM Outreach

- ✓ Donation of \$10k equipment to Essex HS STEM Academy.
- ✓ 18 total events, 7 on-site included >100 GF employees reaching 800 students ranging from grade 3-12 to University.
- ✓ Solar eclipse April 8 with Echo

GIV



Echo + GF Eclipse

BTV PRIDE Parade



## CET / ERG

- ✓ Welcome 6 NEW ERG Leaders
- ✓ Penguin plunge raised \$19k for Special Olympics
- ✓ Celebrating Black History Month
- ✓ Jackie Robinson Foundation Scholars (NYC)



GW Networking Dinner



External Partnerships & Outreach

Building a Culture of Inclusion

Creating a Sense of Belonging

Building & Celebrating Our Teams

- ✓ Hiring of women doubled from 2022 to 2023 (to 24%)
  - ✓ 50% of NCG hired in 2023 were women.
- ✓ Hiring for minorities increased from 24% to 34%
- ✓ 2023 Interns: 54% women and 27% URM

GF goes Ice Skating



## Site Events

- ✓ 5 large employee/family events
- ✓ 1500+ employees & family members participating

## Recognition

- ✓ 925 employees recognized through the Quarterly recognition raffles with 53 raffle winners
- ✓ 122 employees recognized through the Champ Awards
- ✓ 2270 Appreciation, Spotlight & Excellence Awards

## Site Refresh

- ✓ 7 spaces completed
- ✓ Fitness Center to open in mid December

Kids to Work Day



# GF Power

Oct 2022, Public Utility Commission approved GF Power, LLC. as a VT. Regulated Utility

- Limited to serving a single customer, GlobalFoundries

GF Power operations started Feb 2023

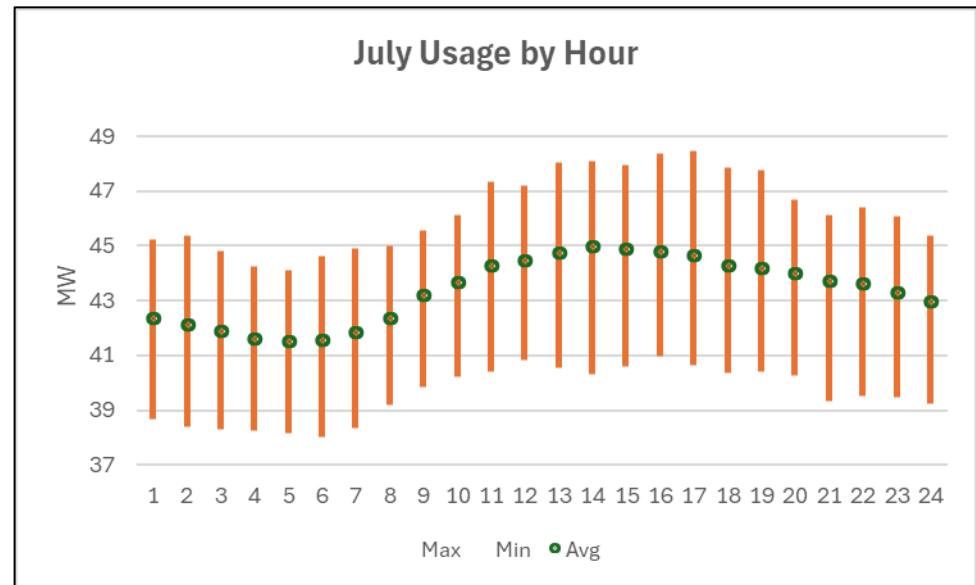
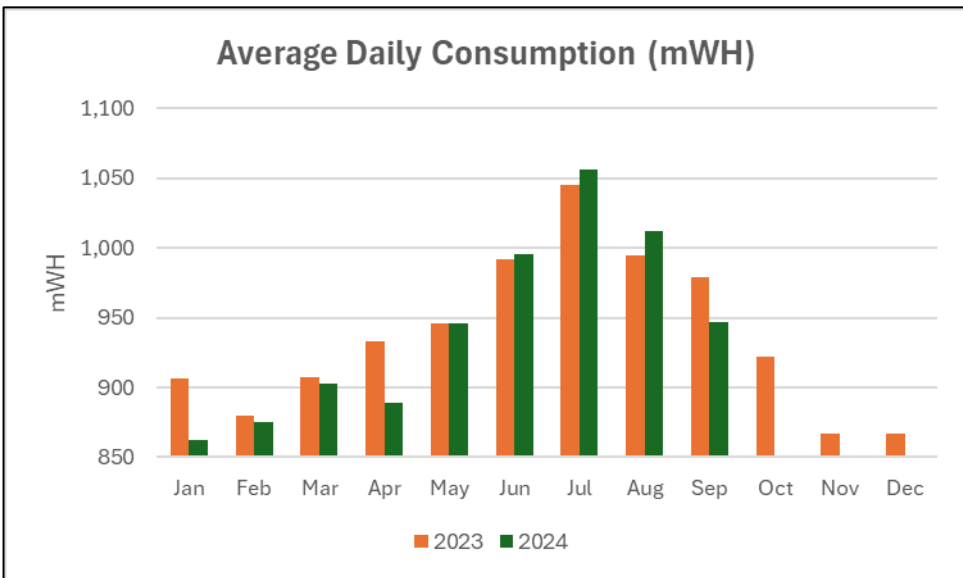
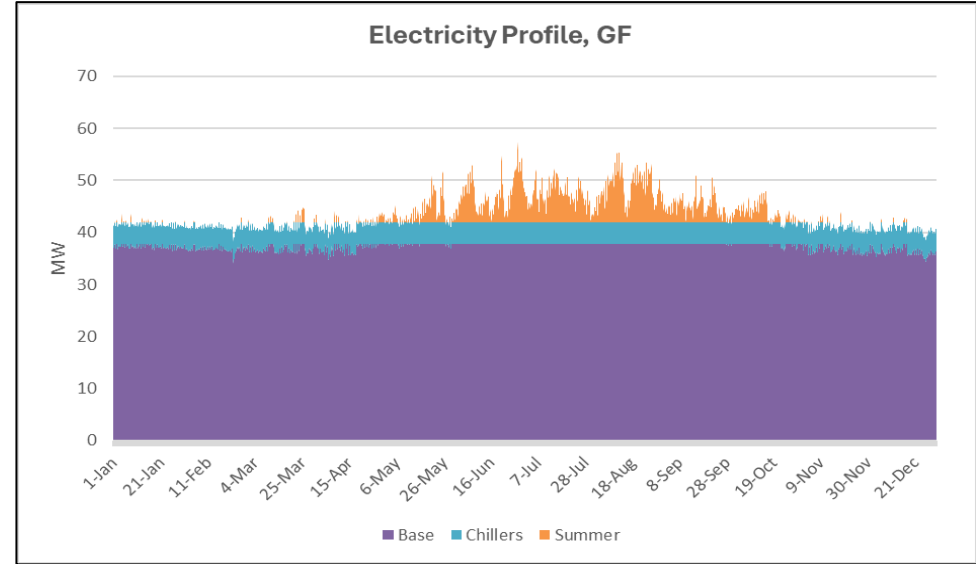
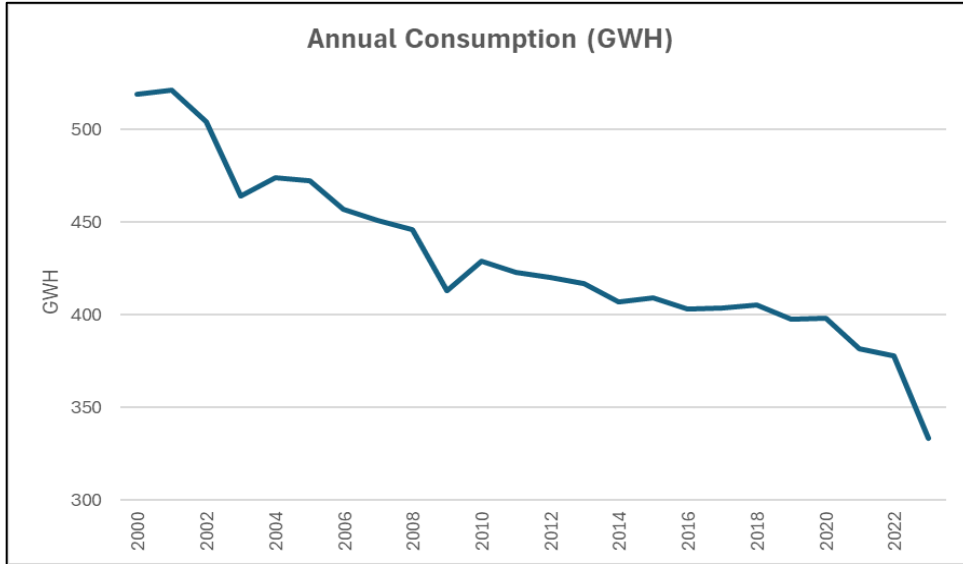
- Customer of ISO New England and VELCO for transmission & grid services
- Full-services, transition PPA w/ Green Mountain Power until Sep 2026

Maximize the Value of GF Power

- Negotiate Whole-Sale Electricity Contract for Oct 2026+
- Leverage Uniqueness of Utility / Manufacturer
  - On-Site Solar Projects
  - Utility-Scale Battery Project
  - Partner within state creating value with “Beyond Compliance” programs



# Fab 9 Electricity Profiles



# Solar: Phase 1 Projects



## North Parking Lot - 3.25MW

- Repurpose unused, abandoned parking lot

## Chip Alley – 2.25 MW

- Unused former farmland behind Williston buildings

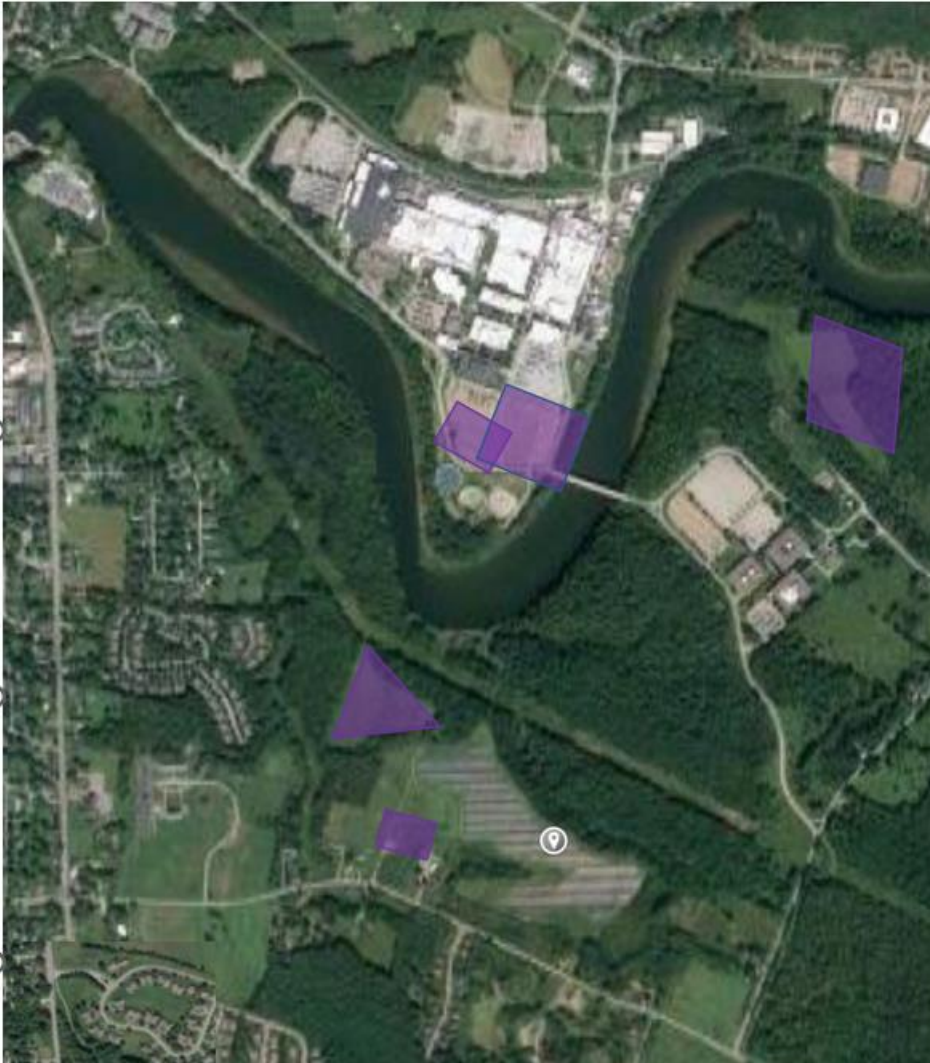
## Redmond Road & Mountain View - 1.4MW

- Former farmland used for haying

## Projects total 7 MW

- Will produce 3% of GF's annual usage
- At peak production will produce up to 20% of current usage
- 25-year Power Purchase Agreement holds GF cost flat

# Solar: Phase 2 Projects



## **B967 Parking Lot - 2.9W**

- Repurpose lightly used, deteriorating parking lot

## **Triangle and Regional Test Center– 2.4 MW**

- (2) small areas previously used for farming (corn) and as a Regional Solar Test Center

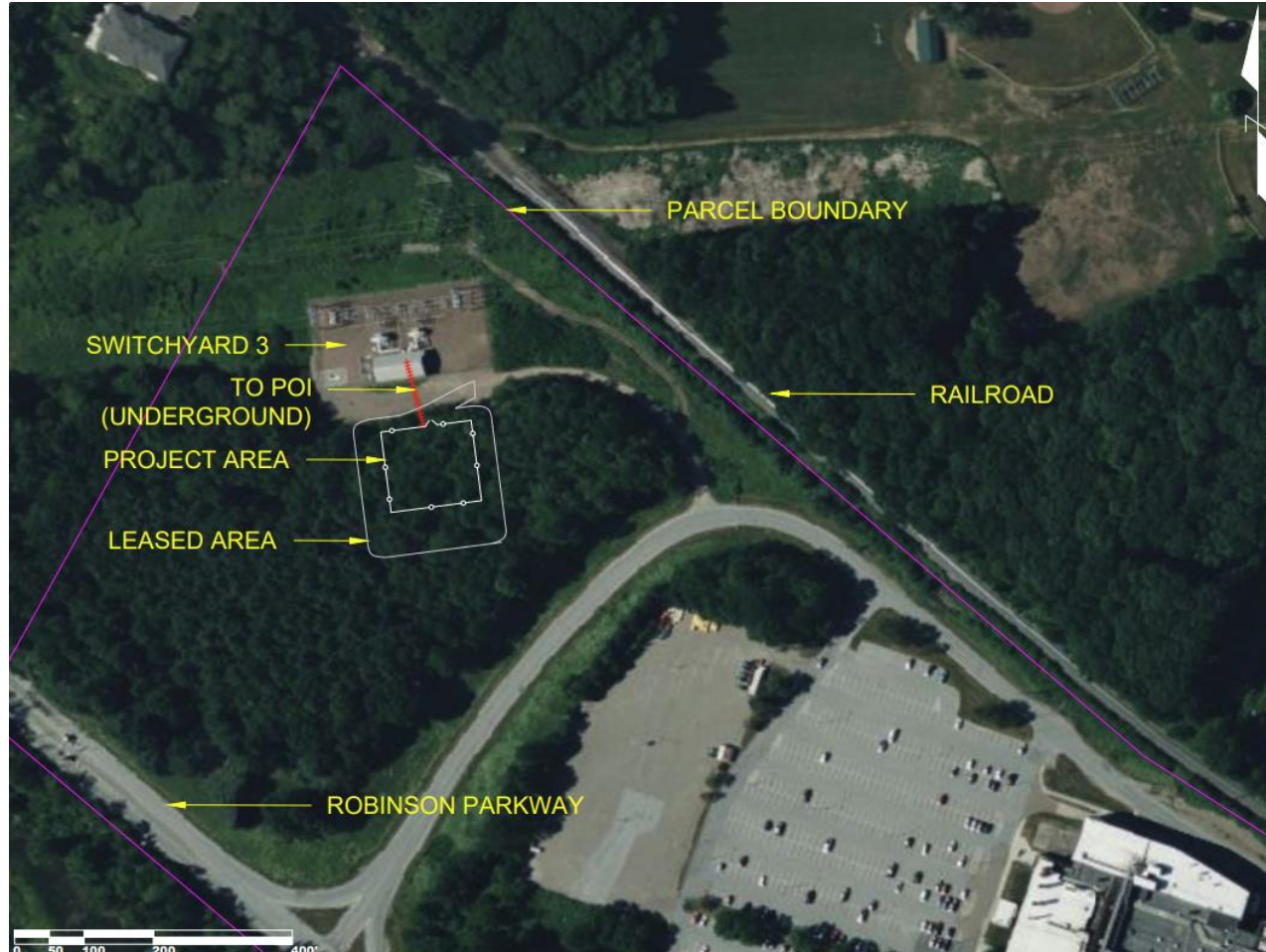
## **Ed's Project 2.6MW**

- Former farmland used for haying

## **Projects total 8 MW**

- Will produce 4% of GF's annual usage
- At peak production will produce up to 20% of current usage
- 25-year Power Purchase Agreement holds GF cost flat

# 15MW Battery



- Partnership with Lightshift Energy
- Install 15mw/50mWH (24 units) Batteries
- Connect to 13kV at GF Swyd #3 / VELCO #87
- Uses
  - Peak shaving
  - Price arbitrage
  - Renewables storage
- Operational 2026